



MEETT Centre de Conventions  
& Congrès de

# Toulouse

3 AU 5 DÉCEMBRE 2025

Bayen et al. *BMC Primary Care* (2025) 26:217  
<https://doi.org/10.1186/s12875-025-02911-0>

BMC Primary Care

RESEARCH

Open Access



# Time is health: management of Parkinson's disease in primary care: a retrospective quantitative study of diagnostic and therapeutic timelines

Sabine Bayen<sup>1,2,3\*</sup> , Xavier Lagon<sup>1</sup> , Charles Cauet<sup>1</sup> , Marc Bayen<sup>1,2</sup> , Teddy Richebe<sup>1</sup> , Nassir Messaadi<sup>1,3,4</sup> and Matthieu Calafiore<sup>1,5,6</sup>

Dr Sabine Bayen, MCU-MG, PhD, HDR, DMG Lille



MEETT Centre de Conventions  
& Congrès de

**Toulouse**

**3 AU 5 DÉCEMBRE 2025**

**Je n'ai aucun conflit d'intérêt à déclarer**



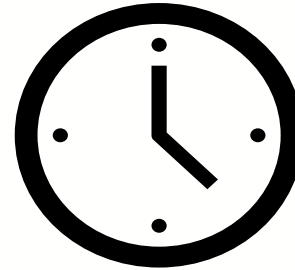
MEETT Centre de Conventions  
& Congrès de

**Toulouse**

**3 AU 5 DÉCEMBRE 2025**

## Submission history

Submission received	
Submission received	11 Nov 2024
Technical check	
Submission is under technical check	11 Nov 2024
Amendment requested	12 Nov 2024
Amendment received	18 Nov 2024
Amendment requested	19 Nov 2024
Amendment received	19 Nov 2024
Submission passed technical check	20 Nov 2024
Editorial assignment	
Ready for editorial assignment	20 Nov 2024
With editor	
Editor assigned	21 Nov 2024
Revision requested	21 Nov 2024
Revision received	23 Nov 2024
Submission passed technical check	23 Nov 2024
Peer review	
First reviewer(s) invited	04 Dec 2024
Reviewer(s) accepted	31 Dec 2024



**4 tours de relecture**



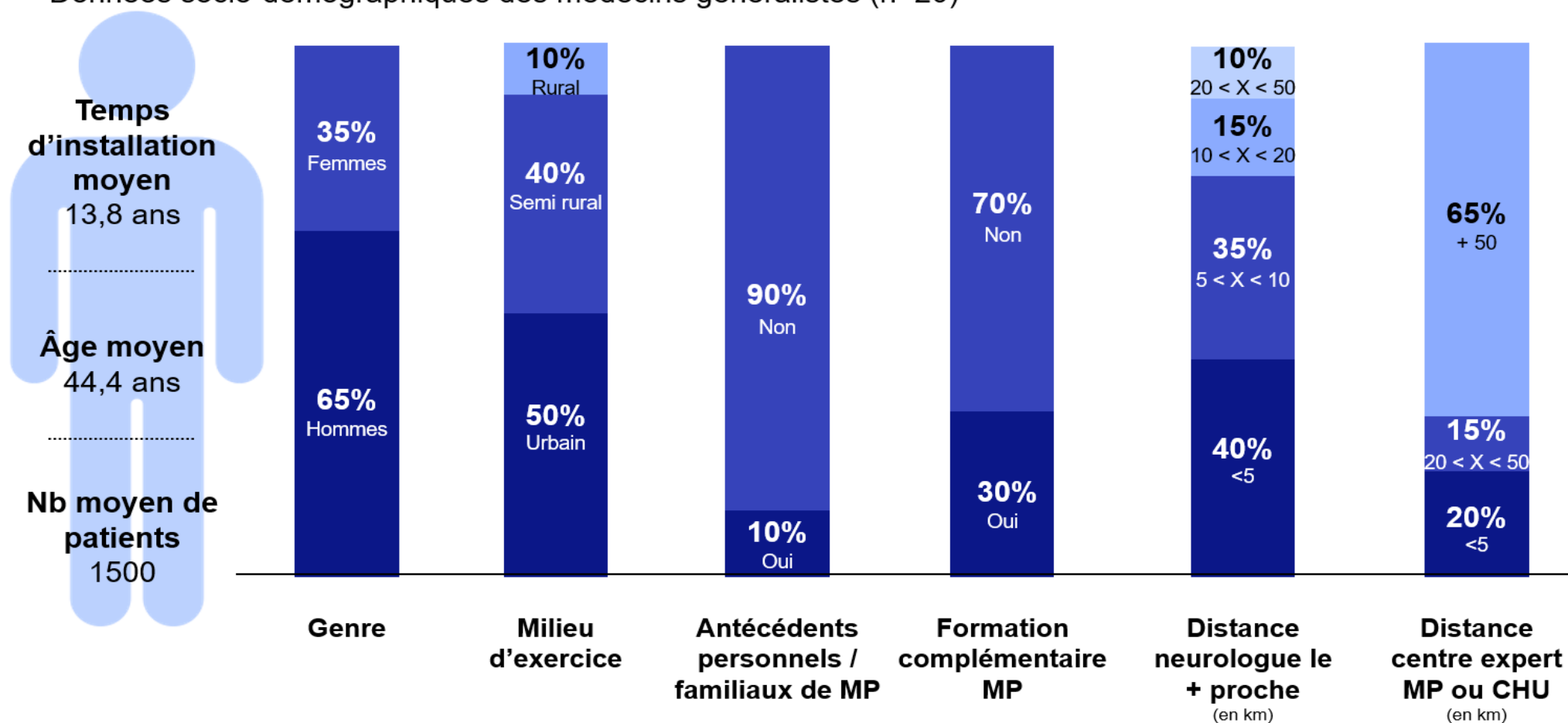
Reviewer report(s) received	11 Jan 2025
Revision requested	29 Apr 2025
Revision received	11 May 2025
Amendment requested	13 May 2025
Amendment received	14 May 2025
Submission passed technical check	14 May 2025
First reviewer(s) invited	18 May 2025
Reviewer(s) accepted	18 May 2025
Reviewer report(s) received	27 May 2025
Revision requested	29 May 2025
Revision received	30 May 2025
Amendment requested	02 Jun 2025
Amendment received	03 Jun 2025
Submission passed technical check	04 Jun 2025
<b>Submission accepted</b>	
Submission accepted	09 Jun 2025
Publishing and rights	
Submission is in publishing and rights	20 Jun 2025
Production	
Publishing and rights complete	22 Jun 2025





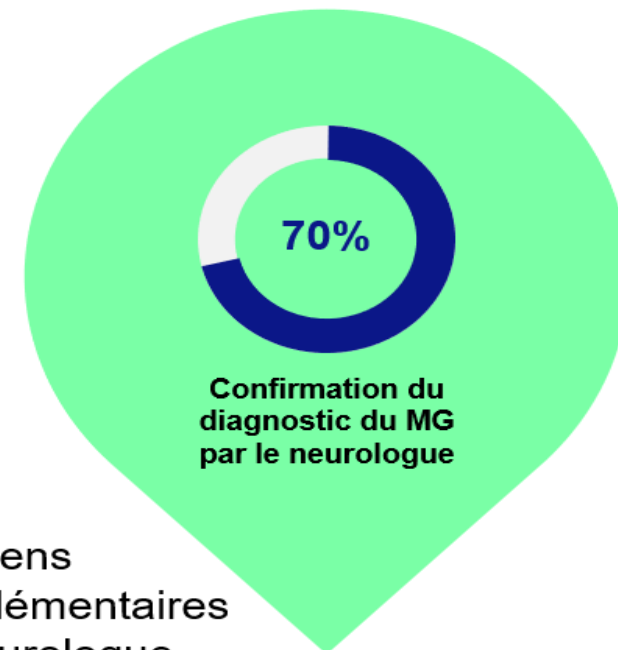
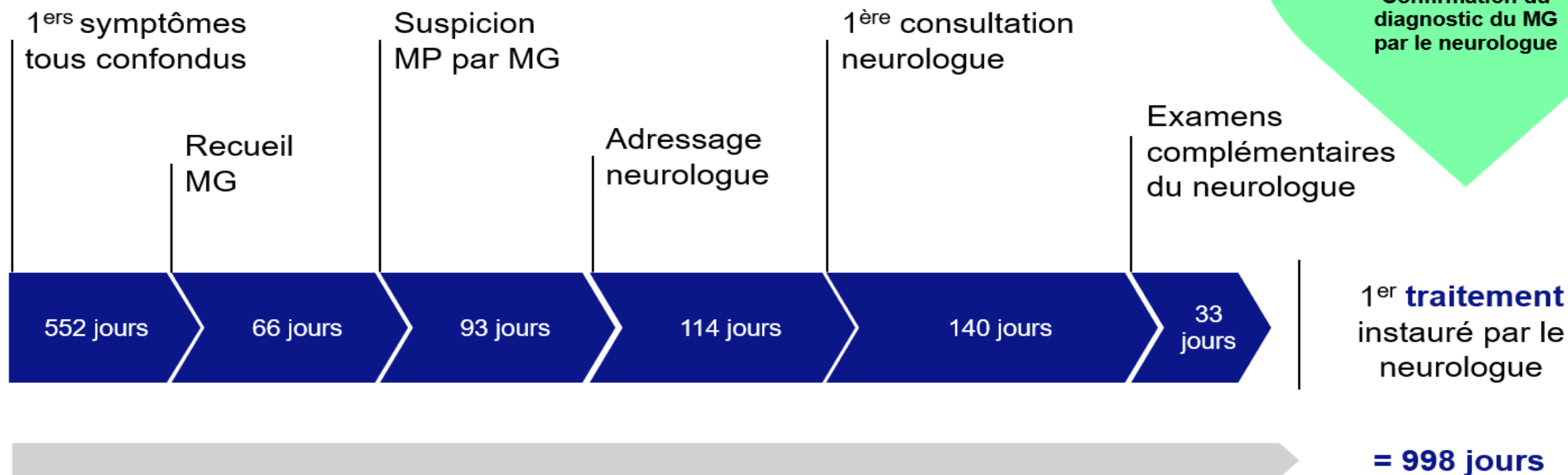
## Résultats | Données

Données socio-démographiques des médecins généralistes (n=20)





## Résultats principaux





#CNGE2025 [www.congrescng.fr](http://www.congrescng.fr)

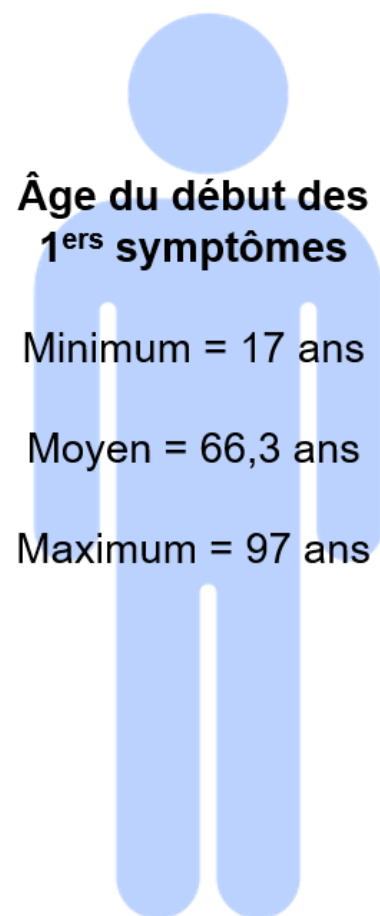


MEETT Centre de Conventions  
& Congrès de

**Toulouse**

**3 AU 5 DÉCEMBRE 2025**

## Données socio-démographiques des patients (n=51)

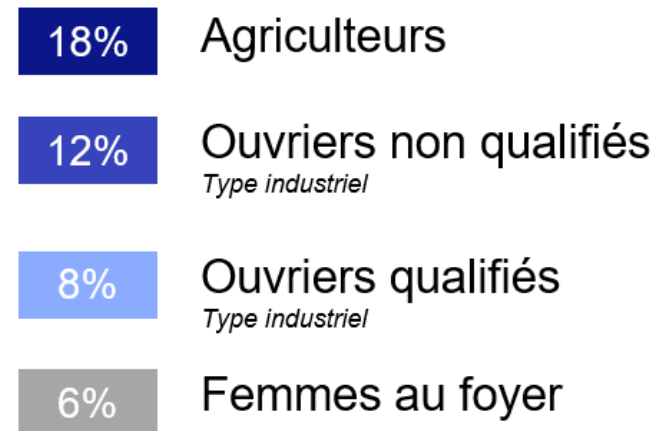
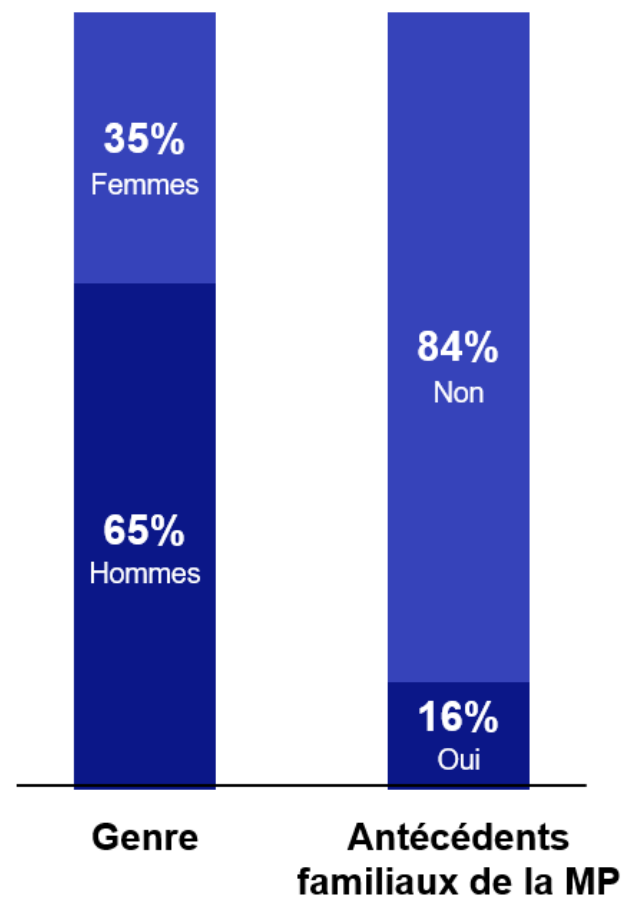


### Âge du début des 1<sup>ers</sup> symptômes

Minimum = 17 ans

Moyen = 66,3 ans

Maximum = 97 ans





Les premiers symptômes observés par le patient

Les premiers symptômes rapportés par le patient au MG

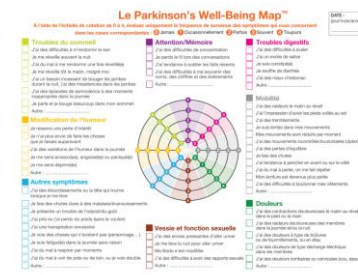
Bayen et al. BMC Primary Care

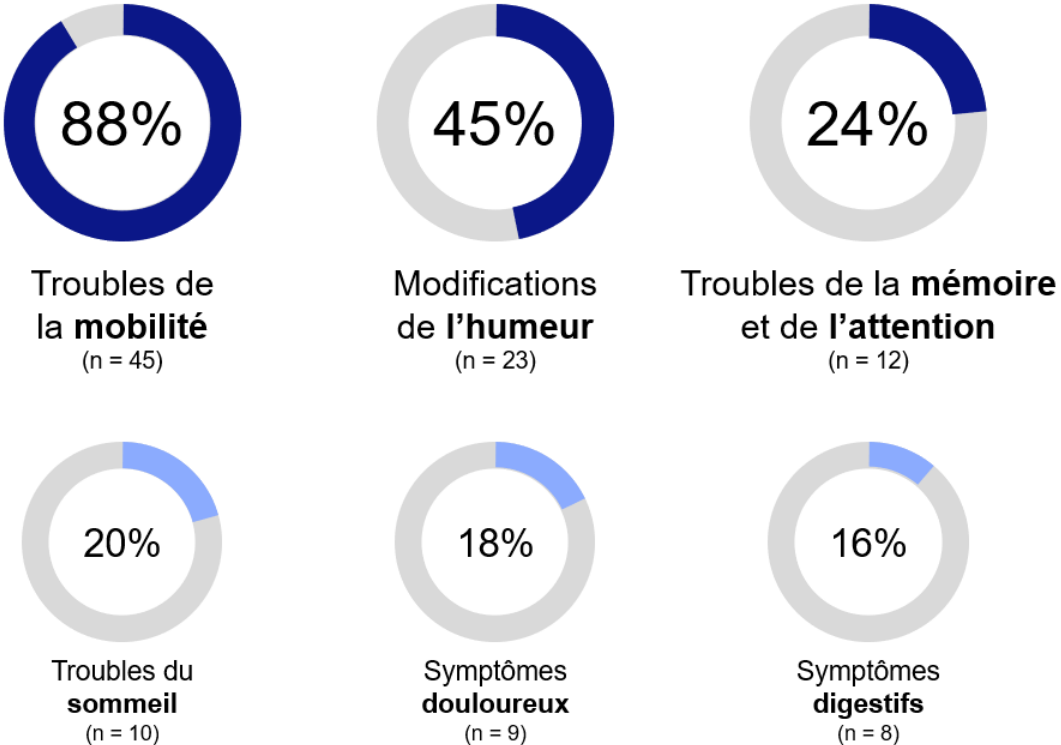
(2025) 26:217

Page 7 of 12

**Table 3** Initial symptoms observed by the patient  
**Breakdown of 1 st symptoms observed by the patient (n = 51)**

	n	(%)
Mobility disorders	45	88
Trembling	32	71
Slowness of movement	24	53
Morning stiffness	18	40
Reduced movement	13	29
Loss of balance	10	22
Feeling of sticky feet	7	16
Mobility disorders	6	13
Mood changes	23	45
Mood changes during the day, feelings of anxiety/anxiety/panic	13	57
Feelings of depression	12	52
Apathy	10	43
Loss of interest	9	39
Memory and attention disorders	12	24
Difficulty concentrating	8	67
Forgetting recent events	7	58
Loss of the thread of conversation	3	25
Difficulty remembering names/numbers/events.	2	17
Sleep disorders	10	20
Frequent waking at night	7	70
Difficulty falling asleep	6	60
Difficulty getting back to sleep	5	50
Incessant need to move your legs	3	30
Early morning awakening	2	20
Sleep disturbed by changes in position	2	20
Painful symptoms	9	18
Cervical/lumbar pain	6	67
Painful stiffness during the day or in the hand	5	56
Painful contractions on waking	2	22
Burning/tingling/squeezing pain	2	22
Digestive symptoms	8	16
Constipation	7	88
Stomachache	1	13
Excess saliva	1	13
Other symptoms	6	12
Taste and smell disorders	2	33
Unexplained fatigue during the day	2	33
Dizziness/head spinning on lifting	1	17
Loss of self-esteem	1	17
Bladder and sexual function disorders	5	10
Altered libido	3	60
Difficulty having sexual intercourse	3	60
Urgent need to urinate	2	40
Gets up at night to urinate	2	40







**PRO**  
**PARKINSON'S**  
RESOURCE ORGANIZATION







#CNGE2025 [www.congrescngc.fr](http://www.congrescngc.fr)



MEETT Centre de Conventions  
& Congrès de

**Toulouse**

3 AU 5 DÉCEMBRE 2025

# TOGETHER IN PARKINSON'S

EP . 202 | TIME IS HEALTH:  
DIAGNOSTIC DELAYS WITH  
DR. SABINE BAYEN

with Dr. Sabine Bayen, MD, PhD  
Senior Lecturer, University of Lille



Lire K

